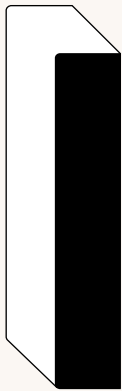
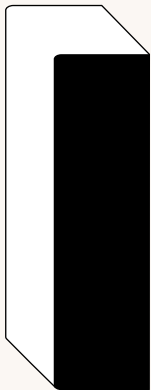


E2E - 1/2 X 2 1/2" x 1-1/2" (M)	E2E - 1/2 X 4 1/2" x 3-1/2" (M)	E2E - 1/2 X 6 1/2" x 5-1/2" (M)
E2E - 1/2 X 3 1/2" x 2-1/2" (M)	E2E - 1/2 X 5 1/2" x 4-1/2" (M)	E2E - 1/2 X 8 1/2" x 7-1/4" (M)



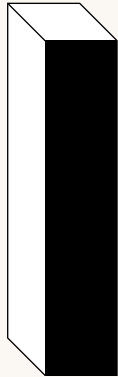
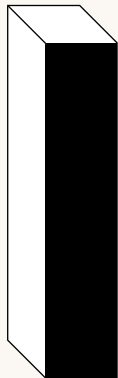
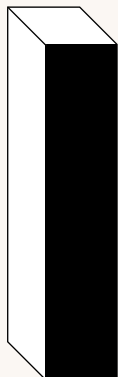
E2E - 1 X 2 11/16" x 1-1/2" (KA) (M)	E2E - 1 X 5 11/16" x 4-9/16" (KA) (M)	E2E - 1 X 8 11/16" x 7-1/4" (KA) (M)
E2E - 1 X 3 11/16" x 2-1/2" (KA) (M)	E2E - 1 X 6 11/16" x 5-1/2" (KA) (M)	E2E - 1 X 10 11/16" x 9-1/4" (KA) (M)
E2E - 1 X 4 11/16" x 3-1/2" (KA) (M)	E2E - 1 X 7 11/16" x 6-9/16" (KA) (M)	E2E - 1 X 12 11/16" x 11-1/4" (KA) (M)

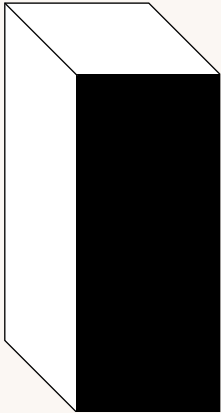


E2E - 5/4 X 4 1" x 3-1/2" (KA) (M)	E2E - 5/4 X 6 1" x 5-1/2" (KA) (M)	E2E - 5/4 X 8 1" x 7-1/4" (KA) (M)
--	--	--

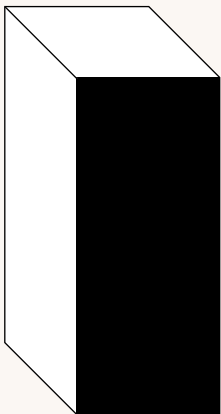
KEY:	H Hemlock	FJP Fingerjoint Primed Pine	KA Knotty Alder	F Fir	M MDF	C Cedar
-------------	------------------	------------------------------------	------------------------	--------------	--------------	----------------

S4S

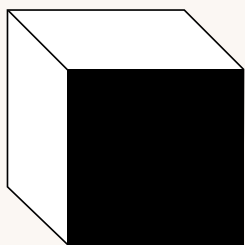
**S4S - 1 X 2 MG**3/4" x 1-1/2" | **H****S4S - 1 X 5 MG**3/4" x 4-1/2" | **H****S4S - 1 X 3 MG**3/4" x 2-1/2" | **H****S4S - 1 X 6 MG**3/4" x 5-1/2" | **H****S4S - 1 X 10 MG**3/4" x 9-1/4" | **H****S4S - 1 X 4 MG**3/4" x 3-1/2" | **H****S4S - 1 X 8 MG**3/4" x 7-1/4" | **H****S4S - 1 X 12 MG**3/4" x 11-1/4" | **H****S4S - 1 X 2 VG**3/4" x 1-1/2" | **H F****S4S - 1 X 5 VG**3/4" x 4-9/16" | **H F****S4S - 1 X 8 VG**3/4" x 7-1/4" | **H F****S4S - 1 X 3 VG**3/4" x 2-1/2" | **H F****S4S - 1 X 6 VG**3/4" x 5-1/2" | **H F****S4S - 1 X 10 VG**3/4" x 9-1/4" | **H F****S4S - 1 X 4 VG**3/4" x 3-1/2" | **H F****S4S - 1 X 7 VG**3/4" x 6-9/16" | **H****S4S - 1 X 12 VG**3/4" x 11-1/4" | **H F****S4S - 1 X 2 FJPR**3/4" x 1-1/2" | **FJP****S4S - 1 X 5 FJPR**3/4" x 4-1/2" | **FJP****S4S - 1 X 3 FJPR**3/4" x 2-1/2" | **FJP****S4S - 1 X 6 FJPR**3/4" x 5-1/2" | **FJP****S4S - 1 X 10 FJPR**3/4" x 9-1/4" | **FJP****S4S - 1 X 4 FJPR**3/4" x 3-1/2" | **FJP****S4S - 1 X 8 FJPR**3/4" x 7-1/4" | **FJP****S4S - 1 X 12 FJPR**3/4" x 11-1/4" | **FJP**



S4S - 2 X 3 VG 1-1/2" x 2-1/2" F	S4S - 2 X 6 VG 1-1/2" x 5-1/2" F	S4S - 2 X 10 VG 23/32" x 9-1/4" F
S4S - 2 X 4 VG 1-1/2" x 3-1/2" F	S4S - 2 X 8 VG 1-1/2" x 7-1/4" F	S4S - 2 X 12 VG 1-1/2" x 11-1/4" F



S4S - 5/4 X 4 1" x 3-1/2" H	S4S - 5/4 X 6 1" x 5-1/2" H	
S4S - 5/4 X 4 1-1/16" x 3-1/2" FJP	S4S - 5/4 X 6 1-1/16" x 5-1/2" FJP	S4S - 5/4 X 8 1-1/16" x 7-1/4" FJP



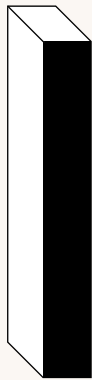
S4S - 2 X 2 MG 1-1/2" x 1-1/2" H F	S4S - 2 X 2 1-1/2" x 1-1/2" O POP
S4S - 4 X 4 MG 3-1/2" x 3-1/2" H F	S4S - 4 X 4 3-1/2" x 3-1/2" O

KEY: **H** Hemlock | **FJP** Fingerjoint Primed Pine | **O** Oak | **POP** Poplar | **F** Fir

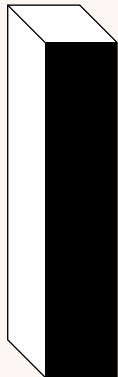
S4S



S4S - 1/4 X 2 1/4" x 1-1/2" POP	S4S - 1/4 X 4 1/4" x 3-1/2" POP	
S4S - 1/4 X 3 1/4" x 2-1/2" POP	S4S - 1/4 X 6 1/4" x 5-1/2" POP	S4S - 1/4 X 8 1/2" x 7-1/4" POP



S4S - 1/2 X 2 1/2" x 1-1/2" POP	S4S - 1/2 X 4 1/2" x 3-1/2" H POP	
S4S - 1/2 X 3 1/2" x 2-1/2" POP	S4S - 1/2 X 6 1/2" x 5-1/2" H POP	S4S - 1/2 X 8 1/2" x 7-1/4" POP



S4S - 1 X 2 3/4" x 1-1/2" O POP B C W MG MPL		
S4S - 1 X 3 3/4" x 2-1/2" O POP B C W MG	S4S - 1 X 6 3/4" x 5-1/2" O POP B C W MG MPL	S4S - 1 X 10 3/4" x 9-1/4" O
S4S - 1 X 4 3/4" x 3-1/2" O POP B C W MG MPL	S4S - 1 X 8 3/4" x 7-1/4" O POP C	S4S - 1 X 12 3/4" x 11-1/4" O POP

KEY: H Hemlock SP Solid Pine FJP Fingerjoint Primed Pine O Oak KA Knotty Alder

SPECIES TYPES



HEMLOCK

Hemlock is light brown with red tinges. It features uneven, commonly twisted grain and has a medium-coarse texture. A good selection if you plan on staining your jamb and frame components.

H



SOLID PINE

Clear Pine is a knot-free wood with a signature rustic look. It is very sturdy and durable.

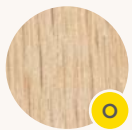
SP



FINGERJOINT PRIMED PINE

Primed Fingerjoint Pine is great for those who plan on painting their millwork but still prefer to work with real wood as opposed to MDF.

FJP



OAK

Oak is very hard, heavy and strong. Despite its density, it is very easy to work with.

O



KNOTTY ALDER

As one would expect, this wood can have many large knots and splits. This is the perfect choice for rustic style projects.

KA



POPLAR

This is the most cost-effective hardwood offered. The softest of the hardwoods, Poplar is excellent for paint grade but can still be stained.

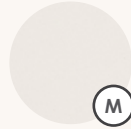
POP



FIR

Douglas Fir is offered in vertical and mixed grain. Its pink color reddens over time.

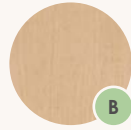
F



MDF

Medium-Density Fiberboard (MDF) is a reconstituted wood panel product. It is dry-processed fiberboard manufactured from wood fibers. Known for its consistency, ease of handling and superior paint adhesion.

M



BIRCH

The wood of Yellow Birch is heavy, strong, close-grained, even-textured and shows a wide color variation from reddish-brown to creamy white. It is used for furniture, cabinetry and interior finish.

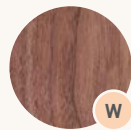
B



CHERRY

Cherry is a very heavy and strong wood that machines and sands very smooth. From furniture to small accessories to built-ins, this is a top class wood.

C



WALNUT

Quite durable and strong, its colors can be light to chocolate brown with large growth rings. The sapwood is often times white.

W



MAHOGANY

One of the foremost cabinet woods in the world. Mahogany is straight grain to interlocked grain and has a medium-coarse texture. Varies slightly in color from light reddish-brown to medium red.

MG



MAPLE

Maple is characterized as dense and light in color. It is a fine textured and close-grained wood that does not require filling.

MPL



CEDAR

Cedar has twice the stability of most commonly available softwoods and is very durable. Excellent for outdoor use.

C